



For Sale: Future Development Land

1694 Driscoll Road

99 acres available in the City of Peterborough, Ontario

Lennard: 201-60 Columbia Way, Markham
905.752.2220

lennard.com

1694 Driscoll Road



Location

Situated in the south part of the city on the North side of Driscoll Road and on the East side of Matchett Line. Backing on to the Otonabee River with scenic views.

Opportunity

Lennard Commercial Realty is pleased to present 99 acres of prime land within the City of Peterborough's Urban boundary. One of the last remaining undeveloped parcels in the city. The property is located within the Coldsprings Secondary Plan. This future development property is on the south side of the city with easy access to Highway 115. With the newly opened Highway 407 extension to Highway 115 now open, a trip to the GTA has been greatly reduced. The property has a small frontage on the Otonabee River (Trent Canal) and is surrounded by future development property. AON owns significant acreage within the Coldsprings Secondary Plan, and Ambria Homes is building Riverbend Estates, a 130 lot subdivision on the south side of this property.

Legal Description

PT LT 22 CON 15 OTONABEE; PT LT 23 CON 15 OTONABEE; DESIGNATED AS PT 1, PL 45R-16396; OTONABEE-S MONAGHAN TOWNSHIP OF OTONABEE-SOUTH MONAGHAN

Seller

2565229 Ontario Inc.

Price

\$8,750,000

Lennard:

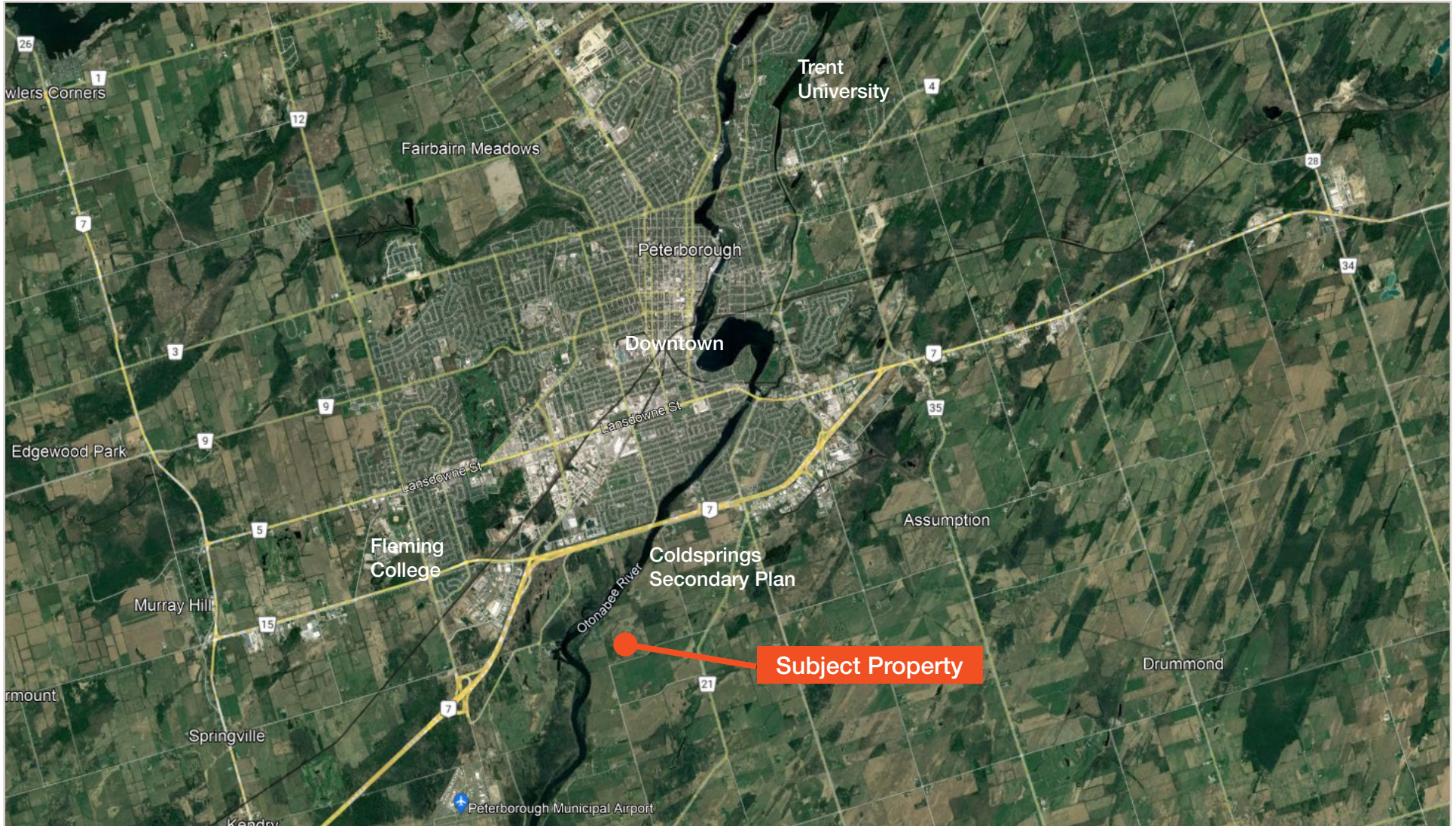
Brad Warren**, Senior Vice President
416.435.0900
bwarren@lennard.com

Stephen Connell*, Senior Vice President
416.721.1018
sconnell@lennard.com

Andrea Warren*
647.234.0566
awarren@lennard.com

lennard.com

1694 Driscoll Road



Lennard:

Brad Warren**, Senior Vice President
416.435.0900
bwarren@lennard.com

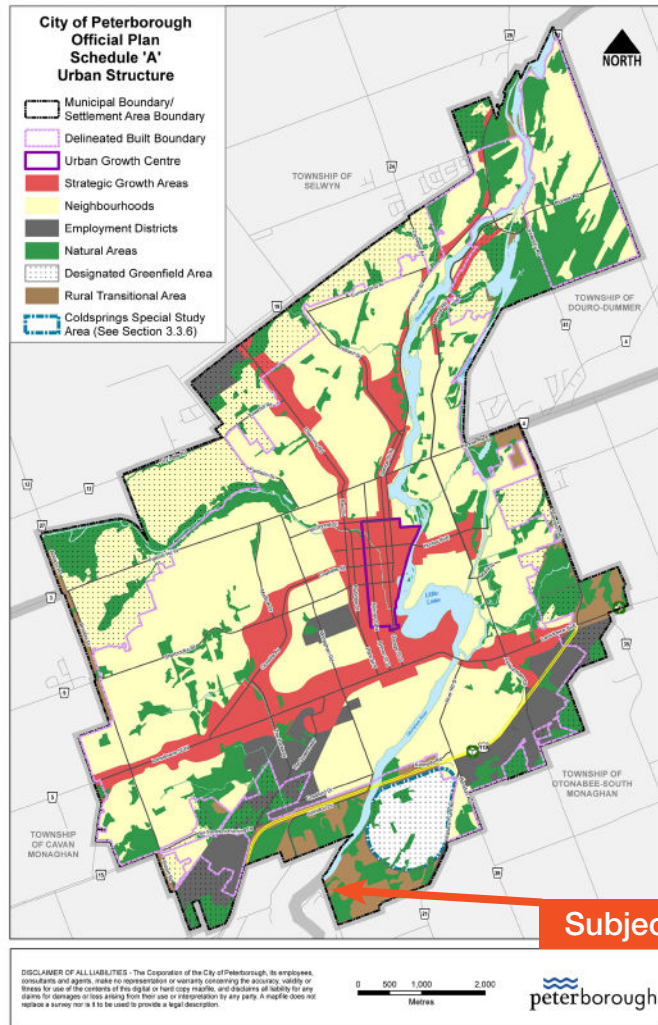
Stephen Connell*, Senior Vice President
416.721.1018
sconnell@lennard.com

Andrea Warren*
647.234.0566
awarren@lennard.com

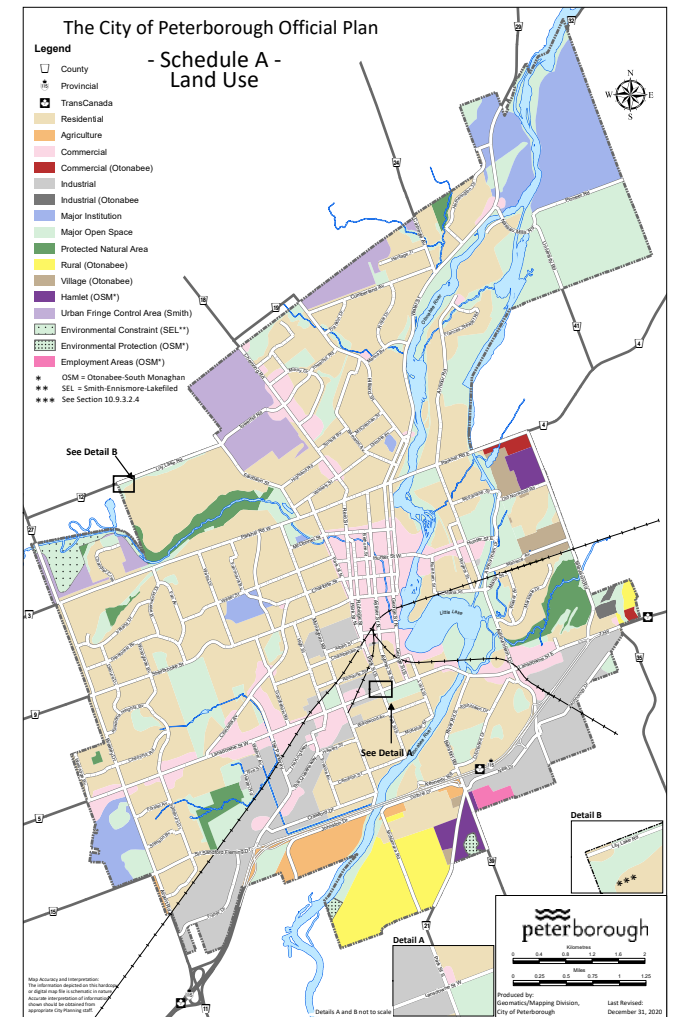
lennard.com

1694 Driscoll Road

Official Plan Maps



One of the last remaining properties for future development in Peterborough



Lennard:

Brad Warren**, Senior Vice President
416.435.0900
bwarren@lennard.com

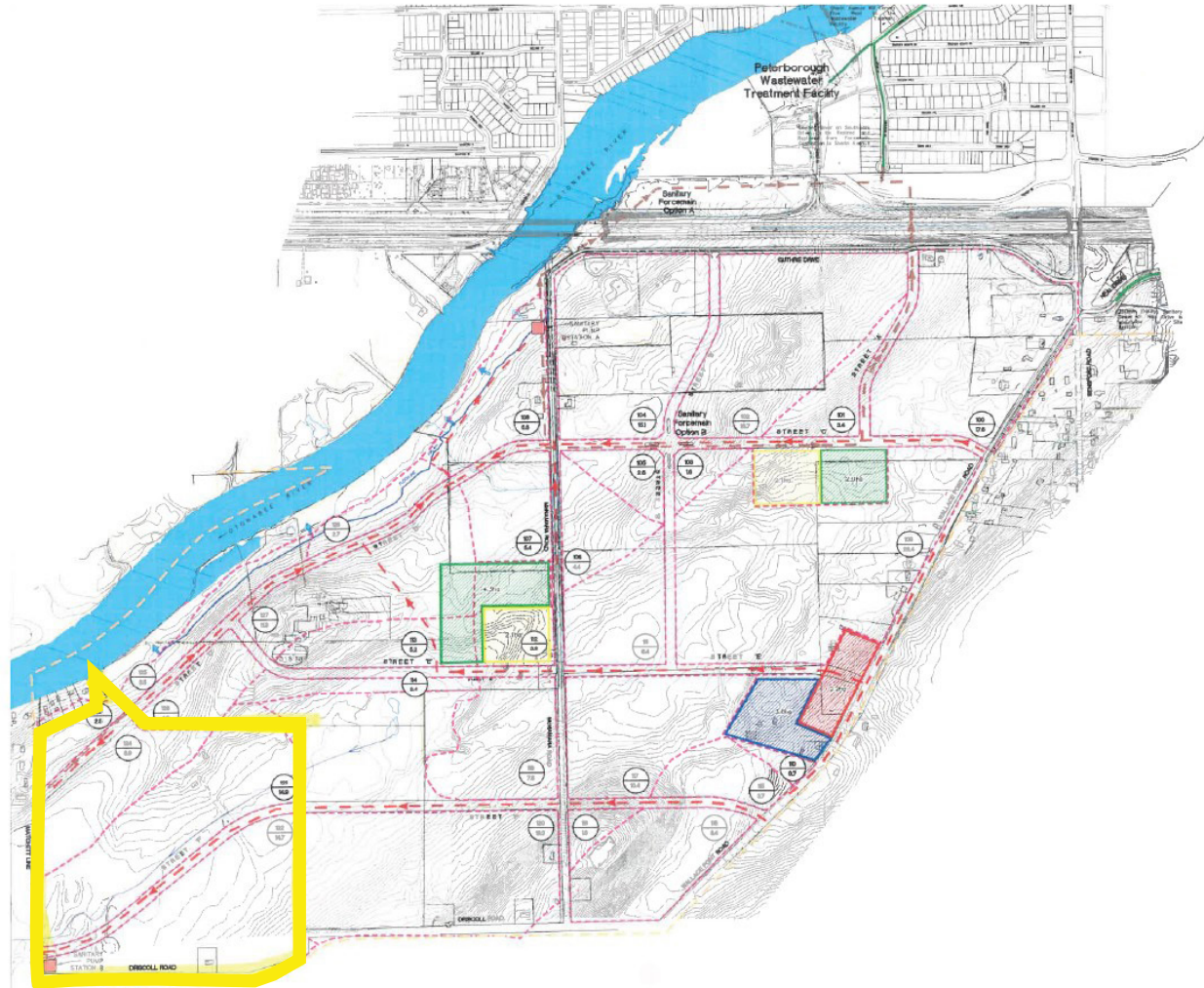
Stephen Connell*, Senior Vice President
416.721.1018
sconnell@lennard.com

Andrea Warren*
647.234.0566
awarren@lennard.com

lennard.com

1694 Driscoll Road

Development Area Map - Coldsprings



Lennard:

Brad Warren**, Senior Vice President
416.435.0900
bwarren@lennard.com

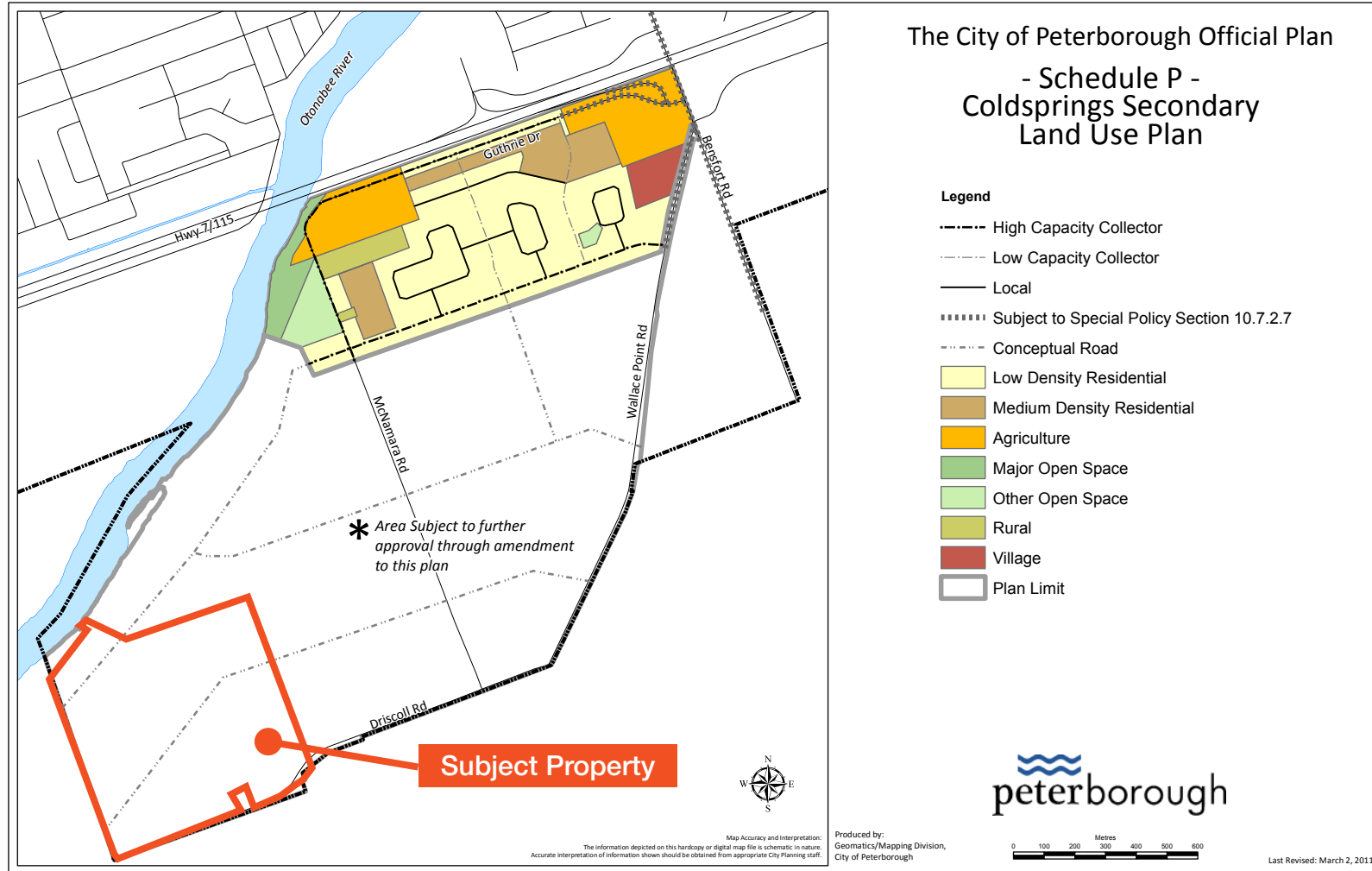
Stephen Connell*, Senior Vice President
416.721.1018
sconnell@lennard.com

Andrea Warren*
647.234.0566
awarren@lennard.com

lennard.com

1694 Driscoll Road

Secondary Plan Map



Lennard:

Brad Warren**, Senior Vice President
416.435.0900
bwarren@lennard.com

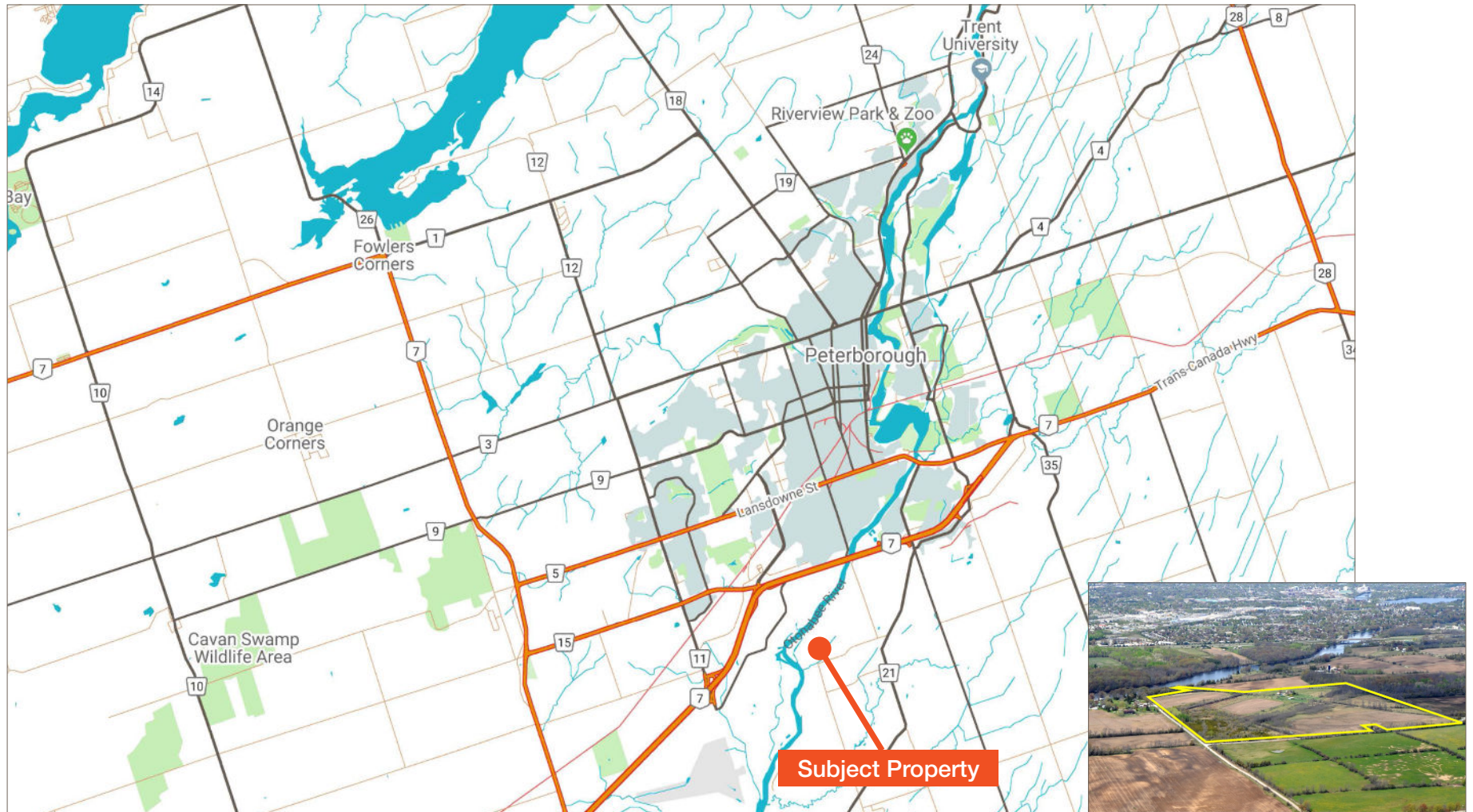
Stephen Connell*, Senior Vice President
416.721.1018
sconnell@lennard.com

Andrea Warren*
647.234.0566
awarren@lennard.com

lennard.com

1694 Driscoll Road

Location Map



Lennard:

Brad Warren**, Senior Vice President
416.435.0900
bwarren@lennard.com

Stephen Connell*, Senior Vice President
416.721.1018
sconnell@lennard.com

Andrea Warren*
647.234.0566
awarren@lennard.com

lennard.com

Lennard:

Brad Warren**, Senior Vice President

416.435.0900

bwarren@lennard.com

Stephen Connell*, Senior Vice President

416.721.1018

sconnell@lennard.com

Andrea Warren*

647.234.0566

awarren@lennard.com

201-60 Columbia Way, Markham

905.752.2220

lennard.com

*Sales Representative **Broker

Statements and information contained are based on the information furnished by principals and sources which we deem reliable but for which we can assume no responsibility. Lennard Commercial Realty, Brokerage 2022.