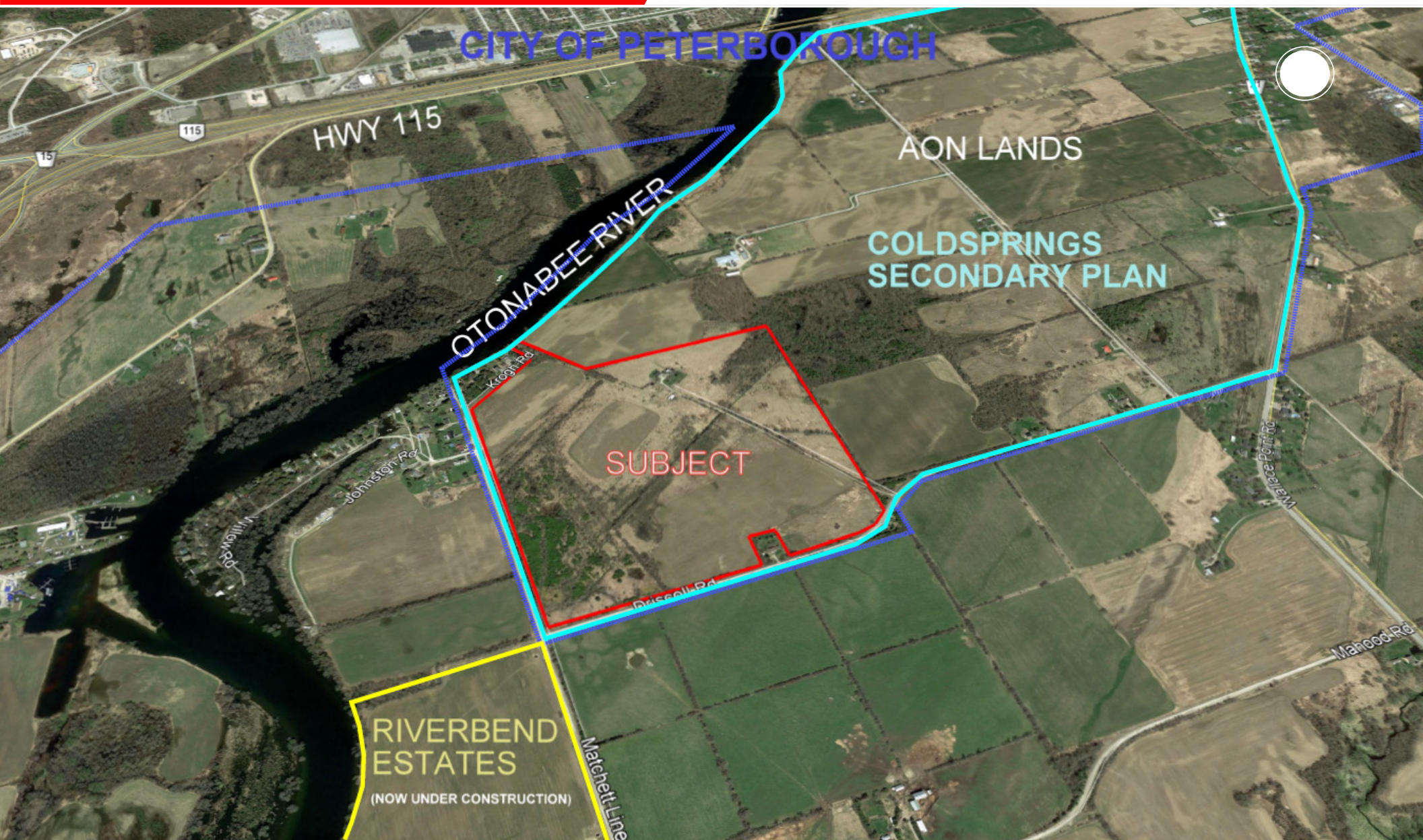


FOR SALE **99 ACRES**



For more information please contact:

Brad Warren**
Vice President
416 756 5418
brad.warren@cushwake.com

Stephen Connell*
Senior Vice President
416 756 5445
stephen.connell@cushwake.com

FOR SALE 99 ACRES



Situated in the south part of the city on the North side of Driscoll Road and the East side of Matchett Line.

C&W is pleased to present 99 acres of prime land within the City of Peterborough's Urban boundary. One of the last remaining undeveloped parcels in the City. The property is located within the Coldsprings Secondary Plan. This future residential development property is on the south side of the city with easy access to the Highway 115. With Highway 407 nearing completion, a trip to Toronto will take well under an hour. The property has a small frontage on the Otonabee River (Trent Canal) and is surrounded by development property. AON will be building on the east side and Ambria Homes is building Riverbend, a 130 lot subdivision on the south side.

PT LT 22 CON 15 OTONABEE; PT LT 23 CON 15 OTONABEE; DESIGNATED AS PT 1, PL 45R-16396; OTONABEE-S MONAGHAN TOWNSHIP OF OTONABEE-SOUTH MONAGHAN

2565229 Ontario Inc.

\$5,800,000.00

VTB will be considered

For more information please contact:

BRAD WARREN**
Vice President
416 756 5418
brad.warren@cushwake.com

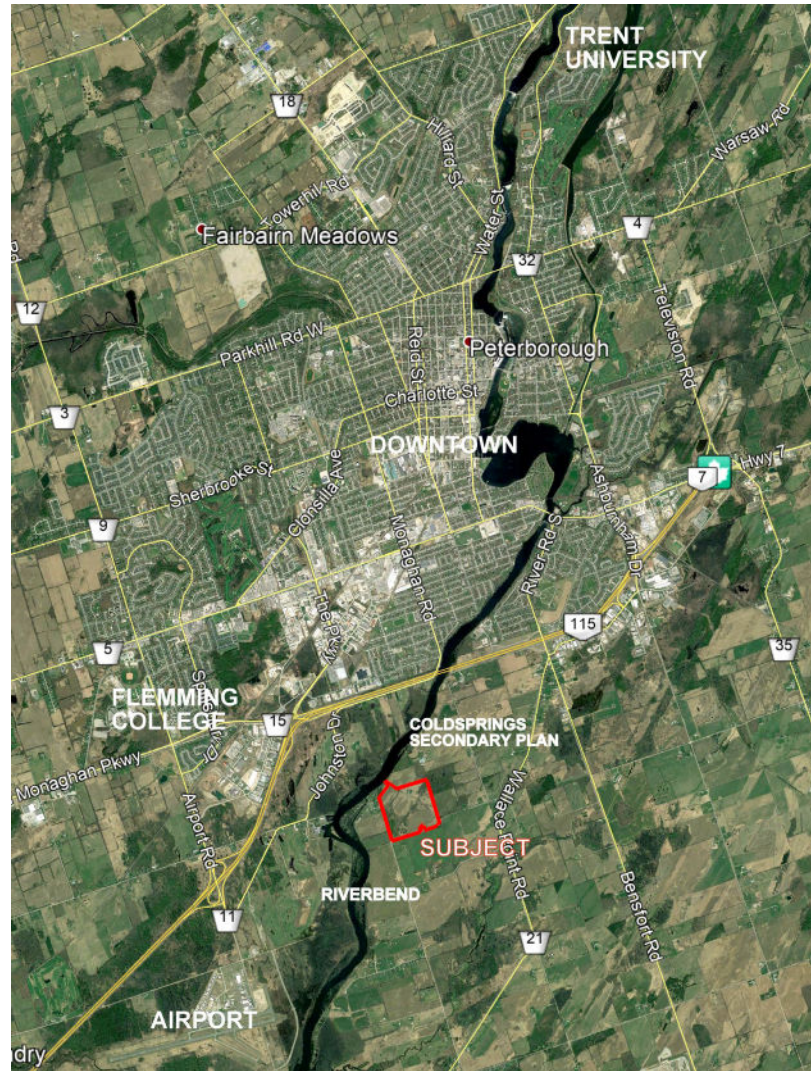
STEPHEN CONNELL*
Senior Vice President
416 756 5445
stephen.connell@cushwake.com

CUSHMAN & WAKEFIELD ULC
3100 Steeles Avenue East, Suite 1100
Markham, ON
main 416 494 9500
fax 416 494 9444
cushmanwakefield.com

FOR SALE 99 ACRES



AERIAL



For more information please contact:

BRAD WARREN**
Vice President
416 756 5418
brad.warren@cushwake.com

STEPHEN CONNELL*
Senior Vice President
416 756 5445
stephen.connell@cushwake.com

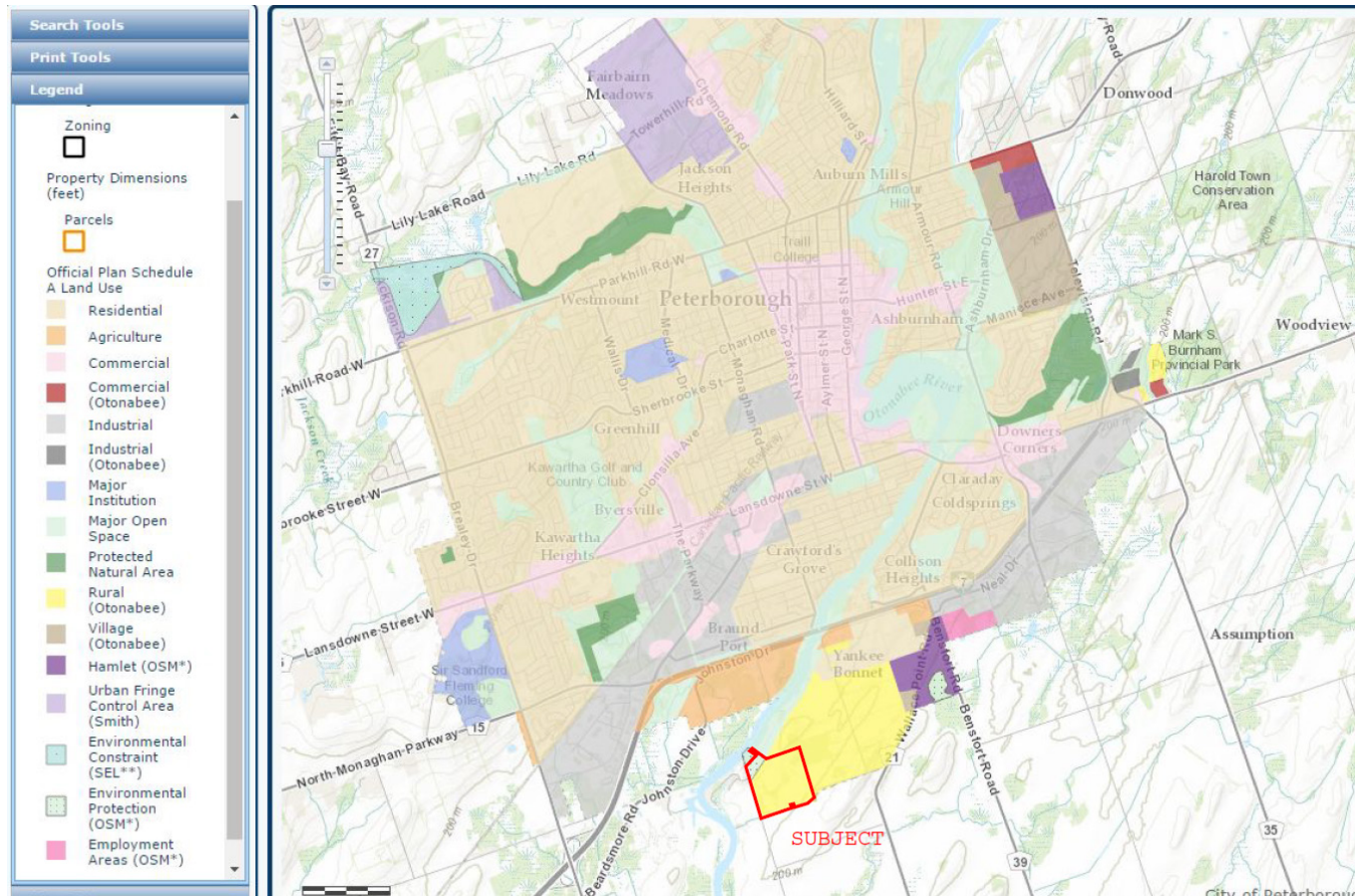
CUSHMAN & WAKEFIELD ULC
3100 Steeles Avenue East, Suite 1100
Markham, ON
main 416 494 9500
fax 416 494 9444
cushmanwakefield.com

©2018 Cushman & Wakefield ULC, Brokerage. All rights reserved. The information contained in this communication is strictly confidential. This information has been obtained from sources believed to be reliable but has not been verified. NO WARRANTY OR REPRESENTATION, EXPRESS OR IMPLIED, IS MADE AS TO THE CONDITION OF THE PROPERTY (OR PROPERTIES) REFERENCED HEREIN OR AS TO THE ACCURACY OR COMPLETENESS OF THE INFORMATION CONTAINED HEREIN, AND SAME IS SUBMITTED SUBJECT TO ERRORS, OMISSIONS, CHANGE OF PRICE, RENTAL OR OTHER CONDITIONS, WITHDRAWAL WITHOUT NOTICE, AND TO ANY SPECIAL LISTING CONDITIONS IMPOSED BY THE PROPERTY OWNER(S). ANY PROJECTIONS, OPINIONS OR ESTIMATES ARE SUBJECT TO UNCERTAINTY AND DO NOT SIGNIFY CURRENT OR FUTURE PROPERTY PERFORMANCE. *Sales Representative**Broker

FOR SALE 99 ACRES



OFFICIAL PLAN MAP



For more information please contact:

BRAD WARREN**

Vice President
416 756 5418
brad.warren@cushwake.com

STEPHEN CONNELL*

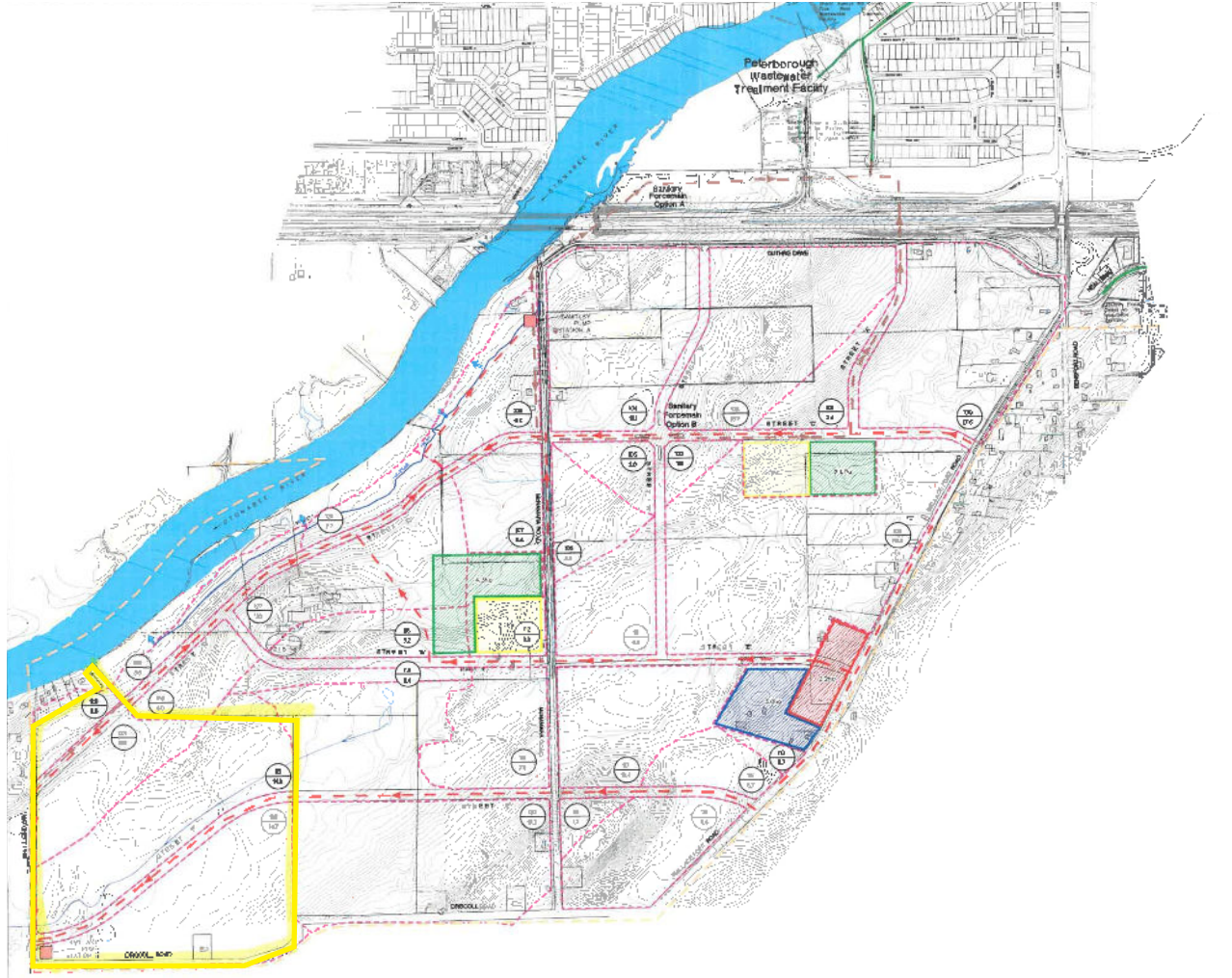
Senior Vice President
416 756 5445
stephen.connell@cushwake.com

CUSHMAN & WAKEFIELD ULC
3100 Steeles Avenue East, Suite 1100
Markham, ON
main 416 494 9500
fax 416 494 9444
cushmanwakefield.com

FOR SALE 99 ACRES



DEVELOPMENT AREA MAP - COLD SPRINGS



For more information please contact:

BRAD WARREN**
Vice President
416 756 5418
brad.warren@cushwake.com

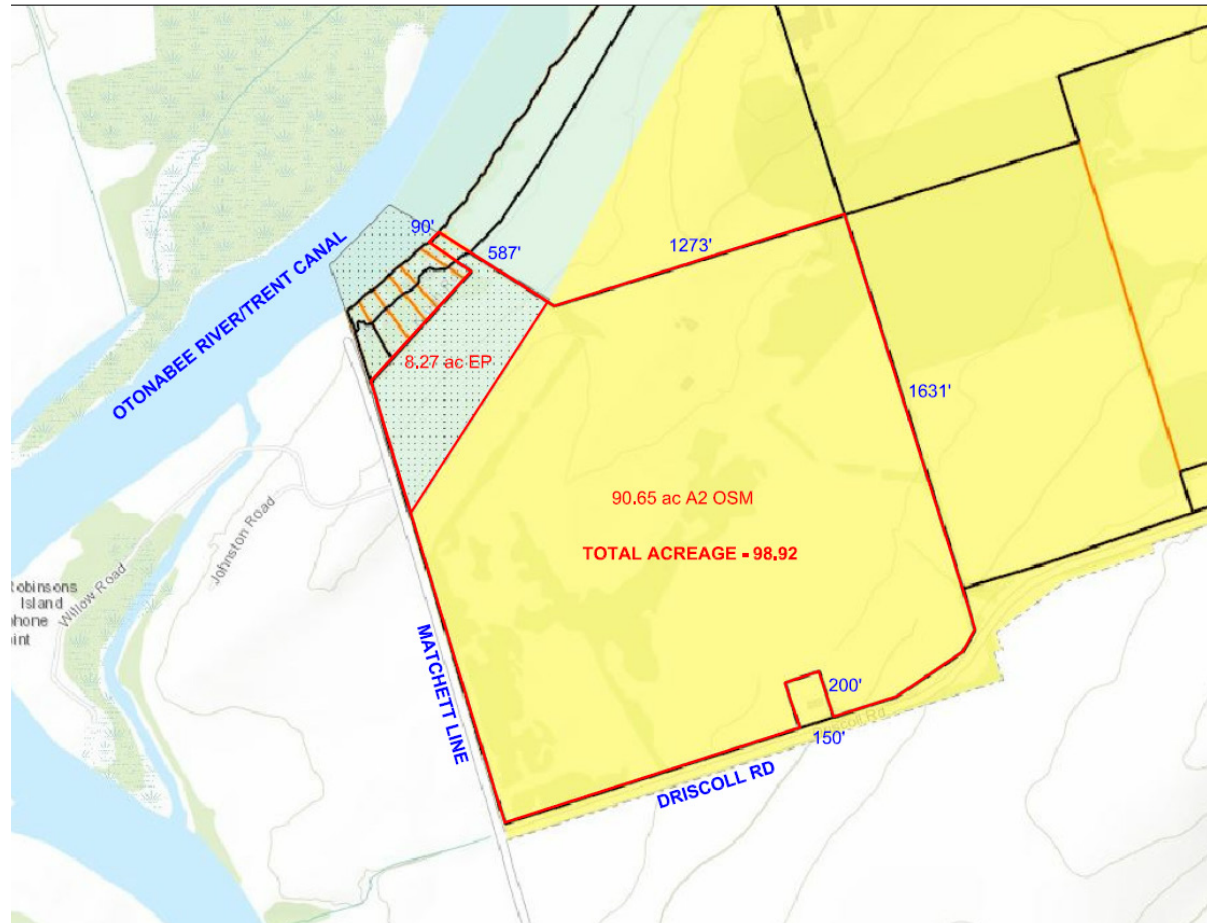
STEPHEN CONNELL*
Senior Vice President
416 756 5445
stephen.connell@cushwake.com

CUSHMAN & WAKEFIELD ULC
3100 Steeles Avenue East, Suite 1100
Markham, ON
main 416 494 9500
fax 416 494 9444
cushmanwakefield.com

FOR SALE 99 ACRES



ZONING - MAP



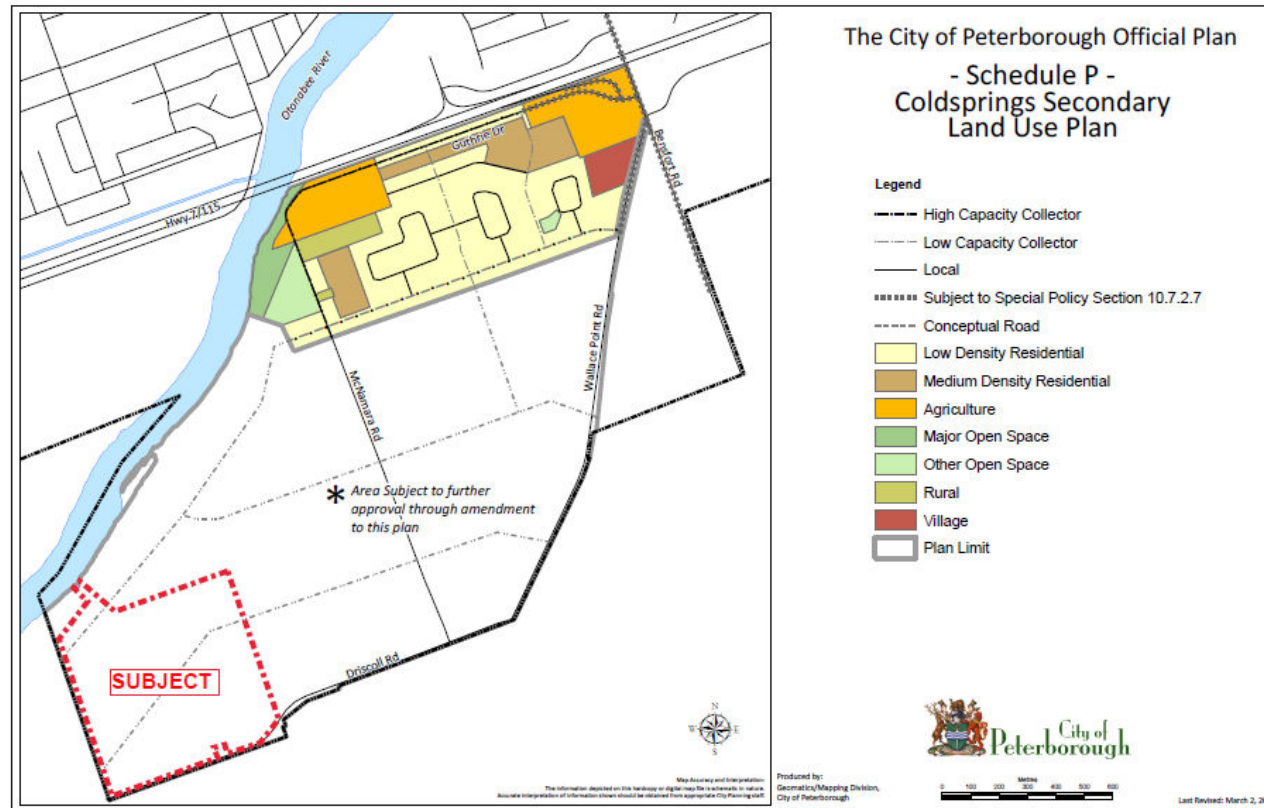
For more information please contact:

BRAD WARREN**
Vice President
416 756 5418
brad.warren@cushwake.com

STEPHEN CONNELL*
Senior Vice President
416 756 5445
stephen.connell@cushwake.com

CUSHMAN & WAKEFIELD ULC
3100 Steeles Avenue East, Suite 1100
Markham, ON
main 416 494 9500
fax 416 494 9444
cushmanwakefield.com

SECONDARY PLAN MAP



For more information please contact:

BRAD WARREN**
Vice President
416 756 5418
brad.warren@cushwake.com

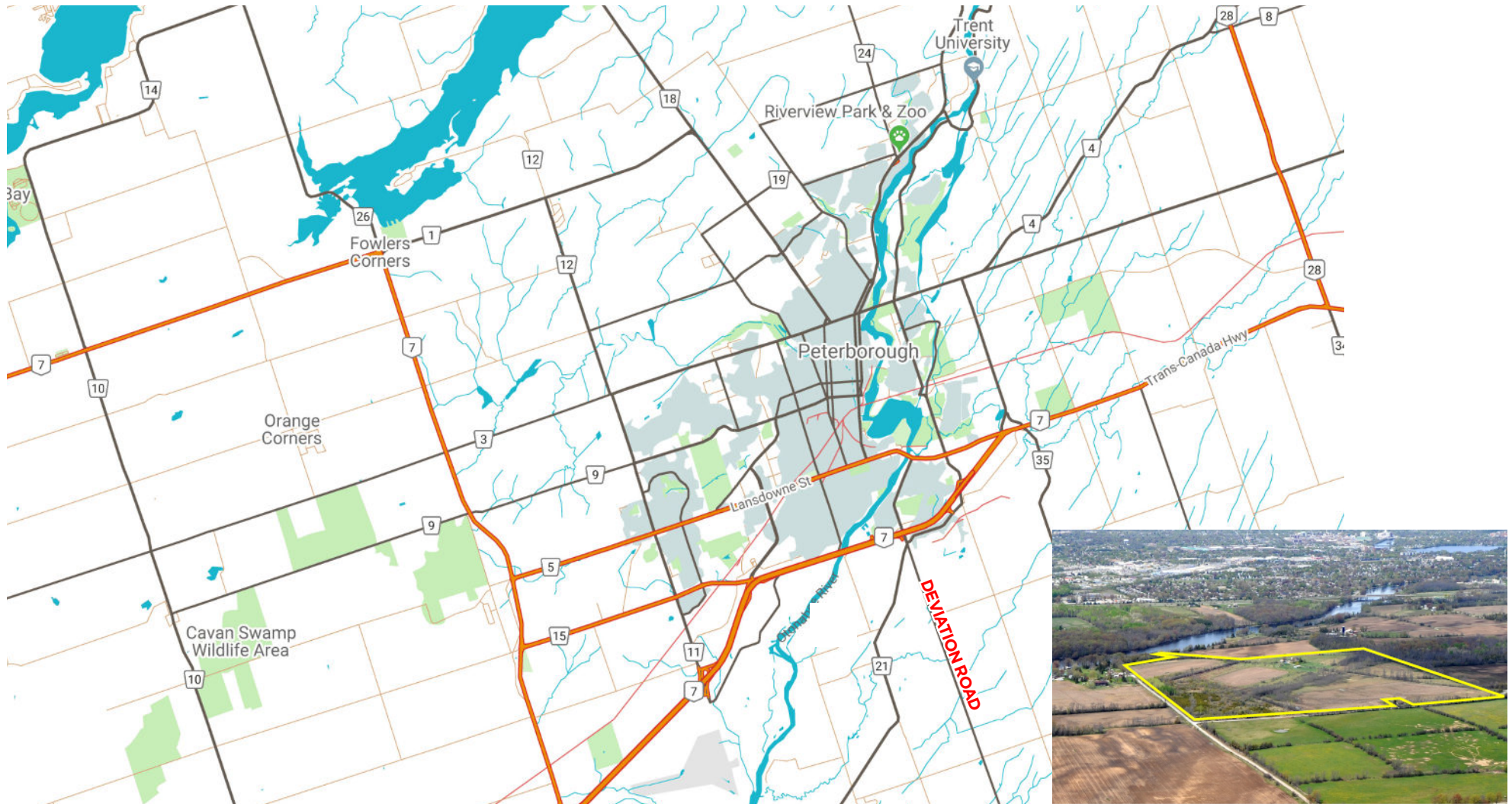
STEPHEN CONNELL*
Senior Vice President
416 756 5445
stephen.connell@cushwake.com

CUSHMAN & WAKEFIELD ULC
3100 Steeles Avenue East, Suite 1100
Markham, ON
main 416 494 9500
fax 416 494 9444
cushmanwakefield.com

FOR SALE 99 ACRES



LOCATION MAP



For more information please contact:

BRAD WARREN**

Vice President
416 756 5418
brad.warren@cushwake.com

STEPHEN CONNELL*

Senior Vice President
416 756 5445
stephen.connell@cushwake.com

CUSHMAN & WAKEFIELD ULC
3100 Steeles Avenue East, Suite 1100
Markham, ON
main 416 494 9500
fax 416 494 9444
cushmanwakefield.com

©2018 Cushman & Wakefield ULC, Brokerage. All rights reserved. The information contained in this communication is strictly confidential. This information has been obtained from sources believed to be reliable but has not been verified. NO WARRANTY OR REPRESENTATION, EXPRESS OR IMPLIED, IS MADE AS TO THE CONDITION OF THE PROPERTY (OR PROPERTIES) REFERENCED HEREIN OR AS TO THE ACCURACY OR COMPLETENESS OF THE INFORMATION CONTAINED HEREIN, AND SAME IS SUBMITTED SUBJECT TO ERRORS, OMISSIONS, CHANGE OF PRICE, RENTAL OR OTHER CONDITIONS, WITHDRAWAL WITHOUT NOTICE, AND TO ANY SPECIAL LISTING CONDITIONS IMPOSED BY THE PROPERTY OWNER(S). ANY PROJECTIONS, OPINIONS OR ESTIMATES ARE SUBJECT TO UNCERTAINTY AND DO NOT SIGNIFY CURRENT OR FUTURE PROPERTY PERFORMANCE. *Sales Representative**Broker